



# Ash Tree

Original title:

**A girl in a graveyard touches the tombstones. Her hand glides over the letters and the carved inscriptions. Can she read death? Can she see death? In Ash Tree, the beginning of all knowledge, the alphabet, mingles with the end of all knowledge, death.**

## CREDITS

**DIRECTOR:** Sarah Vanagt

**PRODUCER:** Sarah Vanagt

**CAST:** Ruby Bembard

**EDITING:** Inneke Van Waeyenberghe

**PHOTOGRAPHY:** Annemarie

Lean-Vercoe

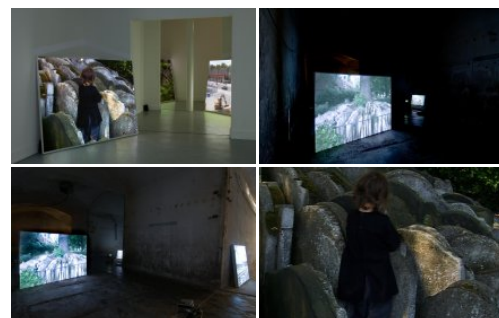
## TECHNICAL SPECS

**RUNNING TIME:** 5 x 1'

**ASPECT RATIO:** 1.33:1 (4:3)

**SOUND FORMAT:** stereo (2.0)

**COLOUR:** Colour



## CONTACT & SALES

### CONTACT

Balthasar

[info@balthasar.be](mailto:info@balthasar.be)

## CREATION DETAILS

**TYPE:** Series

**PRODUCTION SHARE:** Majority Flemish  
Production

**YEAR OF PRODUCTION:** 2007

**PRODUCTION STATUS:** Completed

**ORIGINAL LANGUAGE:** English

## MORE INFO

[flandersimage.com](http://flandersimage.com)