



Direct Cut

Original title: Direct Cut

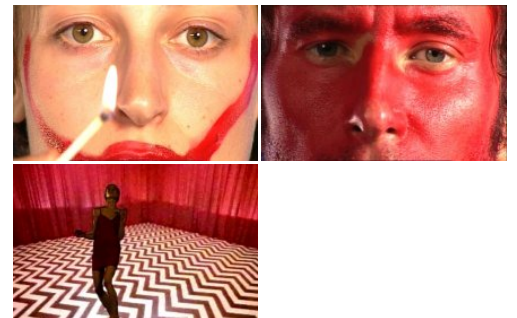
An interactive installation based on three axes: contemporary cinema, interactive cinema and social psychology. Each of the axes allow the development of a complex and rich environment. Direct Cut is about two people: a woman and a man. Their relationship is difficult and complex. However the spectator has the most important role because he is continuously involved in the process of these evolving characters. Each new step in the play zone changes the heroes' attitudes towards the viewer. But at the same time it also affects their own relationship. The viewer controls different scripts and operates as a film director and an actor, making the triangular relationship an even more complex figure.

CREDITS

DIRECTOR: Alexandra Dementieva
PRODUCER: Alexandra Dementieva
WRITER: Anne Van Wichelen
CAST: Heike Langsdorf
EDITING: Alexandra Dementieva
PHOTOGRAPHY: Marijke Van Kets

TECHNICAL SPECS

RUNNING TIME: 35'
SOUND FORMAT: stereo (2.0)
RELEASE FORMAT: Digital Betacam
COLOUR: Colour



CREATION DETAILS

TYPE: Film
PRODUCTION SHARE: Majority Flemish
 Production
YEAR OF PRODUCTION: 2005
PRODUCTION STATUS: Completed
ORIGINAL TITLE: Direct Cut
ORIGINAL LANGUAGE: English

CONTACT & SALES

CONTACT

ADEM
 T 02 217 94 34
ademxl@gmail.com

MORE INFO

flandersimage.com

flanders©

