



Dreaming Walls

Original title: Dreaming Walls

The Chelsea Hotel was an icon of 1960s counterculture and a haven for famous artists and intellectuals, including Patti Smith, Janis Joplin, Sid Vicious and the superstars of Warhol's factory. But now it is being renovated, and will soon reopen as one of New York's most fashionable luxury hotels. Fifty-one long-time residents continue to live and create in the midst of the building work, caught between fear of the future, weariness and excitement. The film meanders through the hotel, examining its living body, and exploring the traces of the past, searching for the unique spirit that forged and perpetuates its myth.

CREDITS

DIRECTOR: Maya Duverdier, Amélie Van Elmbt
PRODUCER: Hanne Phlypo
WRITER: Maya Duverdier, Amélie Van Elmbt
EDITING: Julie Naas, Marie-Hélène Dozo, Alain Dessauvage
PHOTOGRAPHY: Virginie Surdej, Joachim Philippe

TECHNICAL SPECS

RUNNING TIME: 78'
AVAILABLE IN: 2D
ASPECT RATIO: 16:9
SOUND FORMAT: 5.1 (+sub)
RELEASE FORMAT: DCP
COLOUR: Colour

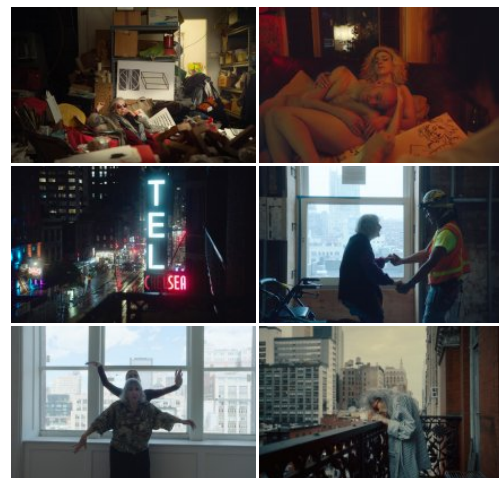
CONTACT & SALES

CONTACT

Clin d'oeil films (Brussel)
info@clindoeilfilms.be

SALES

Dogwoof Sales
T +44 (0)20 7253 6244
info@dogwoof.com



CREATION DETAILS

TYPE: Film
PRODUCTION SHARE: Minority Flemish co-production
GENRE: Documentary
YEAR OF PRODUCTION: 2022
PRODUCTION STATUS: Completed
ORIGINAL TITLE: Dreaming Walls
ORIGINAL LANGUAGE: English

MORE INFO

flandersimage.com

flanders[®]_i



 Flanders
State of the Art