



Prelude to the Sea

Original title: Prélude à la mer

Prelude to the Sea, from the music by Claude Debussy and a work by Stéphane Mallarmé, is a sublime musical poem of the absent; the disappearing. Set in the dried out Aral Sea, this poem is confronted with a catastrophic environment: a place where a whole lake is disappearing.

CREDITS

DIRECTOR: Thierry De Mey

PRODUCER: Jan Roekens

WRITER: Anne Teresa De Keersmaeker, Thierry De Mey

CAST: Mark Lorrimer, Cynthia Loemij

EDITING: Boris Vanderavoort

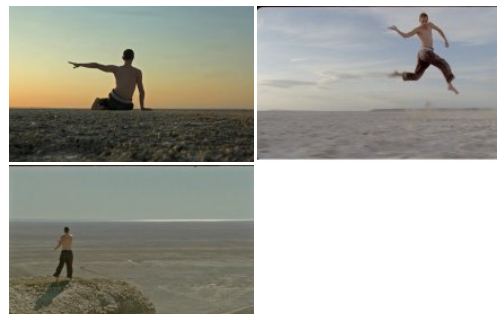
PHOTOGRAPHY: Philippe Guilbert, Aliocha Vanderavoort

TECHNICAL SPECS

RUNNING TIME: 19' 46"

ASPECT RATIO: 16:9

COLOUR: Colour



CONTACT & SALES

CONTACT

Sophimages

T +32 2 223 04 79

sophimages@skynet.be

MORE INFO

flandersimage.com

CREATION DETAILS

TYPE: Film

PRODUCTION SHARE: Minority Flemish co-production

YEAR OF PRODUCTION: 2009

PRODUCTION STATUS: Completed

ORIGINAL TITLE: Prélude à la mer

ORIGINAL LANGUAGE: no dialogues