



The Swell

Original title: Als de dijken breken

The Swell tells the contemporary story of what would happen in the Netherlands and Belgium if the dikes and dams were to collapse. Five million people live on land that is way below sea level. What will remain of these areas if a flood were to occur? The weather in the Netherlands has been increasingly fierce, and everyone is braced for impact. Could this be the super storm that hits the country only once every 10,000 years? In the darkest of scenarios, that would mean a catastrophe for inhabitants of the coastal provinces. Millions of people would be faced with an impossible choice and would be in danger of their lives when the levees break. We follow six of these people in a compelling and emotional narrative mosaic. The Swell is about what life-threatening conditions do to relationships, about a national government under pressure and the resilience of a nation. And the storm continues to have a hold on the characters once the tide has turned. How do you start over when everything has been destroyed?

CREDITS

DIRECTOR: Hans Herbots

PRODUCER: Dirk Impens

WRITER: Karin Van der Meer, Wout Thielemans

CAST: Roos Dickmann, Simone Milsdochter, Susan Visser, Thomas Ryckewaert, Tom Audenaert, Gijs Scholten van Aschat, Marie-Mae Van Zuilen, Loek Peters, Aart Staartjes, Ad van Kempen, Bianca Krijgsman, Daisy Van Praet, Frank Lammers, Ingrid De Vos, Jamelia Sanda Nana, Joppe Degrijse, Lene Lanckriet

EDITING: Gert Fimmers

PHOTOGRAPHY: Laurens De Geyter

ART DIRECTION: Jan Rutgers

CREATION DETAILS

TYPE: Series

PRODUCTION SHARE: Minority Flemish co-production

YEAR OF PRODUCTION: 2016

PRODUCTION STATUS: Completed

ORIGINAL TITLE: Als de dijken breken

TECHNICAL SPECS

RUNNING TIME: 6 x 45'

AVAILABLE IN: 2D

COLOUR: Colour

CONTACT & SALES

CONTACT

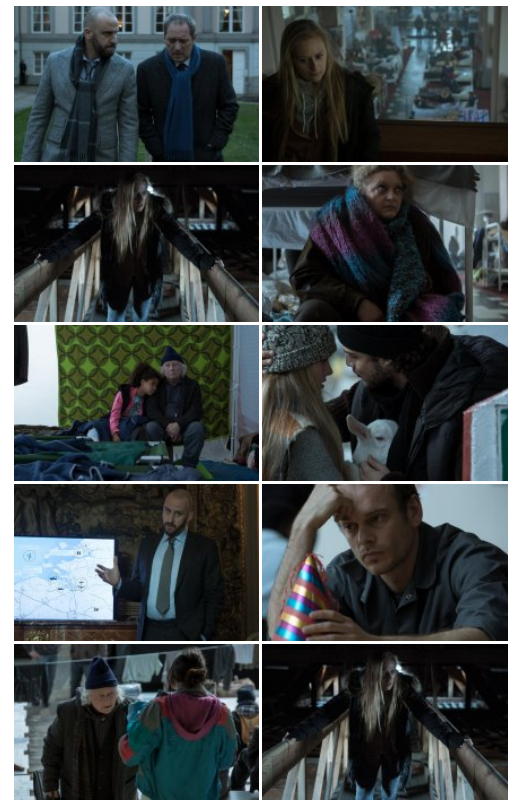
Menuet

alberte.gautot@menuet.be

SALES

Dutch Features Global Entertainment

T +31 642 40 69 22



MORE INFO

flandersimage.com