



Where the World Ends

Original title: Where the World Ends

One hour's drive from Vilnius, everyone must pass a strict border control on leaving the 'Free West' for Belarus, 'the last dictatorship in Europe'. Crossing this border is a time-consuming and often absurd procedure. Some people are confronted with this on a daily basis, since the border literally cuts through their backyards. Visiting relatives or friends, going to church or cemeteries, is a complicated process involving crossing point schedules, visas and other bureaucratic procedures. This is the paradox of a free Schengen region.

CREDITS

DIRECTOR: Anna Savchenko

PRODUCER: Frederik Nicolai

WRITER: Anna Savchenko, Frederik Nicolai

EDITING: Thomas Pooters

PHOTOGRAPHY: Tatsiana Haurylchyck

SALES AGENT: Valentin Romero

TECHNICAL SPECS

RUNNING TIME: 52' 30"

AVAILABLE IN: 2D

ASPECT RATIO: 16:9

SOUND FORMAT: 5.1 (+ sub) Dolby

RELEASE FORMAT: 4K; DCP (4K)

COLOUR: Colour

CREATION DETAILS

TYPE: Film

PRODUCTION SHARE: Majority Flemish Production

GENRE: Documentary

YEAR OF PRODUCTION: 2021

PRODUCTION STATUS: Completed

ORIGINAL TITLE: Where the World Ends

ORIGINAL LANGUAGE: Russian, Lithuanian

CONTACT & SALES

CONTACT

Off World

T +32 2 412 4040

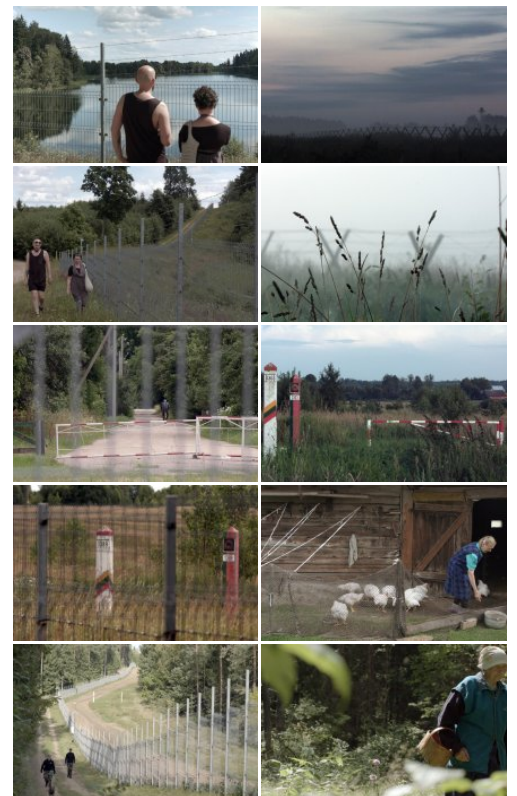
frederik@offworld.be

SALES

3BoxMedia

T +49 221 1692 4890

valentin@3boxmedia.com



MORE INFO

flandersimage.com

flanders*i*



 **Flanders**
State of the Art