



Women

Original title: Mahila

In **Women**, the filmmaker steps between different worlds, going from West to East, from urban to rural surroundings. Her encounters with the experiences and observations of rural Indian women provoke reflection on the process of empowerment. In an artistic ethnography we see and hear how they are using education, technology and politics to redefine their destinies. How are the women fighting to get their stories heard? Can the filmmaker tell other women's stories?

CREDITS

DIRECTOR: Annemie Maes
PRODUCER: Annemie Maes
WRITER: Annemie Maes
EDITING: Annemie Maes

TECHNICAL SPECS

RUNNING TIME: 26'
ASPECT RATIO: 16:9
SOUND FORMAT: stereo (2.0)
COLOUR: Colour

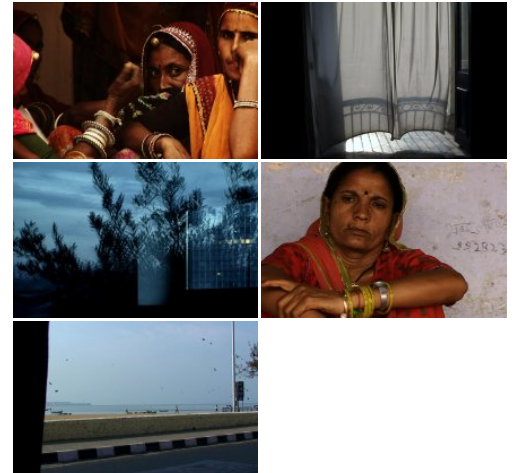
CREATION DETAILS

TYPE: Film
PRODUCTION SHARE: Majority Flemish
 Production
YEAR OF PRODUCTION: 2010
PRODUCTION STATUS: Completed
ORIGINAL TITLE: Mahila
ORIGINAL LANGUAGE: English

CONTACT & SALES

CONTACT

so-on
 T +32 2 410 99 40
annemie@so-on.be



MORE INFO

flandersimage.com